

# NOMADICA

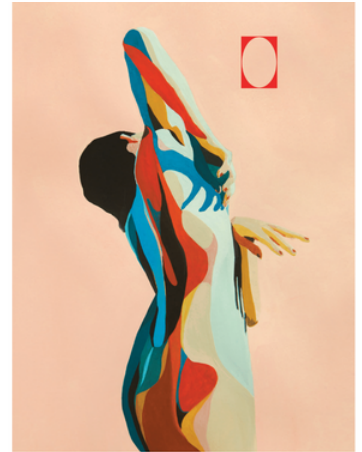


Fermented Dry - Og Sugar / Sustainable Farming /  
Low Intervention / Wine On Draft- 20L Uni-Keg

## Sparkling Rosé

### TASTING NOTES

*Fresh raspberry,  
pomegranate, bright,  
crisp rainwater.*



NOMADICA *Bubbly Rosé*

### WINE SPECIFICATIONS

*Varietals: Grenache Blend*  
*Vintage: NV*  
AVA: California  
Alc / vol: 13%

### VINIFICATION

Aged in stainless steel to  
keep wine crisp and bright

### KEG SPECIFICATIONS

*UniKeg 20L Standard keg coupler.*  
The gas pressure gauge reading  
swill vary by system design but will  
likely be between 11-16 PSI.  
Gas should be 100% CO<sub>2</sub>  
A flow control faucet is  
recommended to minimize  
foaming

### WHY WE LOVE IT

A pink libation that savors of  
serenity, this sparkling rose tastes  
like the inside of a waterfall. Little  
droplets of mineral driven water  
interspersed with the freshness  
and pure juice of just picked red  
raspberries.

### PAIRS WELL WITH

Fish tacos, charcuterie, fried  
chicken, raw salads

### THE ART ON THE CAN

“Pink Body Study”  
by Rocío Montoya  
[@rocio\\_montoya](#)



→ 20L One Way Unikeg- Standard Coupler